

## ***UI-VIEW SETUP FOR FILL-IN DIGI AND FULL DIGI***

**UI-View32** as a **"New Paradigm" fill-in digi.** (Material gathered and graphics constructed by VE7BZC)

**You must be running your TNC in KISS mode to enable the digipeater in UI-View32.**

Go to Setup -> Digipeater Setup

Enable Digi is checked

UI Only is checked

Alias substitution is checked

WIDEn-n is not checked

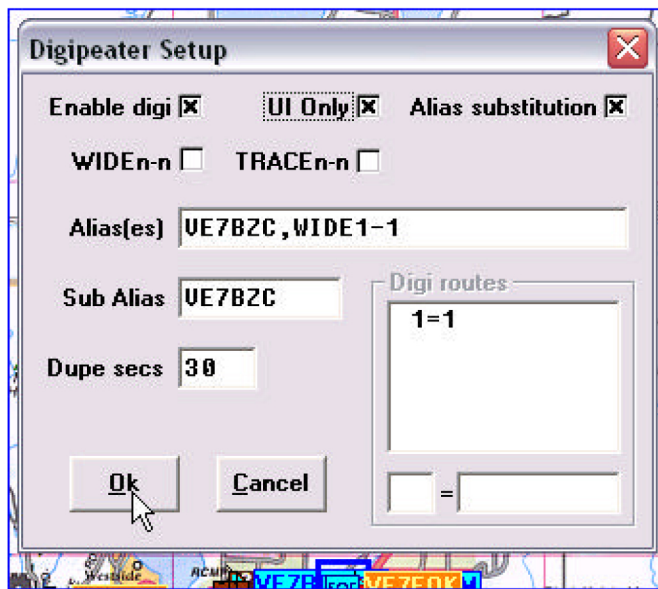
TRACEn-n is not checked

Alias(es) has VE7BZC,WIDE1-1 <substitute your callsign for mine>

Sub Alias has VE7BZC <substitute your callsign for mine>

Dupe secs = 30

Digi routes has 1=1



Click on OK and you're done.

**UI-View32** as a **"New Paradigm" full WIDEn-N digi.**

**You must be running your TNC in KISS mode to enable the digipeater in UI-View32.**

This involves opening up a text file, editing it and saving it. **NOTE:** Save a copy of the original file so if something happens you can easily revert back.

Open the UIVIEW32.INI file (located in C:\Program Files\Peak Systems\UI-View32\) scroll down to the section named [DIGI\_OPTIONS] and set it to match this:

[DIGI\_OPTIONS]

DIGI\_ENABLED=TRUE

UI\_ONLY=TRUE

ALIAS\_SUBSTITUTION=TRUE

DUPE\_SUPPRESS\_SECONDS=30

ALIAS=WIDE6-6,WIDE6-5,WIDE6-4,WIDE6-3,WIDE6-2,WIDE6-1,WIDE5-5,WIDE5-4,WIDE5-

3,WIDE5-2,WIDE5-1,WIDE4-4,WIDE4-3,WIDE4-2,WIDE4-1,VE7BZC <substitute your callsign for mine here>

UIFLOOD=BC <enables BCn-N paths in British Columbia, substitute your province or state >